

# Ø 22/25 mm Selector Switches



## S2SR Series CATALOG

For your safety, read and follow the considerations written in the instruction manual, other manuals and Autronics website.

The specifications, dimensions, etc. are subject to change without notice for product improvement. Some Models may be discontinued without notice.

### Features

- Smooth operation
- High electrical conductivity
- Long-lasting durability

### Specifications

Series	S2SR Series
Actuation angle	2-position: [Spring return] 60° ±5°, 90° ±5° [Maintained] 90° ±5° 3-position: [Spring return] 60° ±5°, 45° ±5° [Maintained] 90° ±5°, 45° ±5°
Actuation force	0.5 kgf (4.9 N) (per 1 contact)
Installation	Extended
Shock	300 m/s <sup>2</sup> (≈ 30 G) in each X, Y, Z direction for 3 times
Shock (malfunction)	100 m/s <sup>2</sup> (≈ 10 G) in each X, Y, Z direction for 3 times
Vibration	1.5 mm amplitude at frequency of 10 to 55 Hz (for 1 min) in each X, Y, Z direction for 2 hours
Vibration (malfunction)	1.5 mm amplitude at frequency of 10 to 55 Hz (for 1 min) in each X, Y, Z direction for 10 minutes
Mechanical life cycle (control unit life cycle)	≥ 100,000 operations (20 operations/min)
Ambient temperature	-15 to 55 °C, storage: -25 to 65 °C (no freezing or condensation)
Ambient humidity	35 to 85 %RH, storage: 35 to 85 %RH (no freezing or condensation)
Protection structure	Control unit: IP52 (IEC standard)
Approval	CE, UL, ENEC, ETL, PS
Control unit weight	Standard head type: ≈ 19 g Shark-head type: ≈ 16 g
Housing weight	≈ 7 g

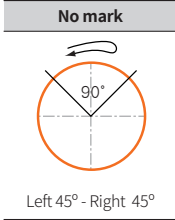
Contact blocks	
Power supply / current	110 VAC~ / 10 A, 250 VAC~ / 6 A
Dielectric strength	2,500 VAC~ 50/60 Hz for 1 minute
Insulation resistance	≥ 1,000 MΩ (500 VDC≡ megger)
Contact resistance	≤ 20 mΩ (initial)
Electrical life cycle	≥ 100,000 operations (20 operations/min)
Contact material	AgNi10
Approval	CE, UL, ENEC, ETL, PS
Weight	Modular type: ≈ 10 g, Singular type: ≈ 11 g
LED blocks	
Rated voltage	AC/DC voltage type: 12-24 VAC~ 50/60 Hz, 12-24 VDC≡ AC voltage type: 110-220 VAC~ 50/60 Hz
Current consumption	≤ 20 mA
Approval	CE, UL, ENEC, ETL
Weight	AC/DC voltage type: ≈ 11 g, AC voltage type: ≈ 12 g

### Sold Separately

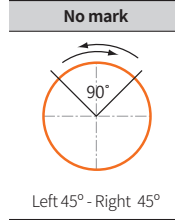
- Contact blocks (SA□-C□□)
- LED blocks (SA□-L□□□)
- Switch enclosures (SA□B□)
- Locking handle (SA□-LH)
- Switch washer (SA-SW□)

## Actuation Angle

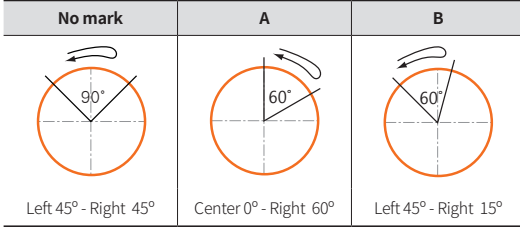
### 2-position spring return (standard lever)



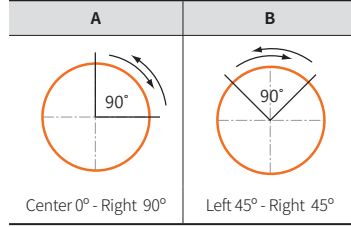
### 2-position maintained (standard lever)



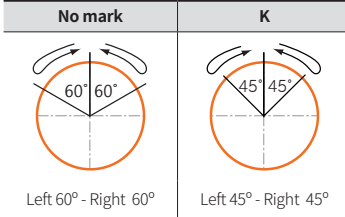
### 2-position spring return (shark-head lever)



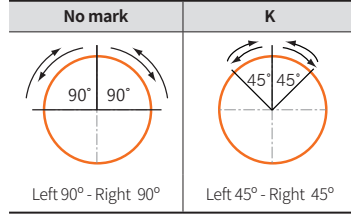
### 2-position maintained (shark-head lever)



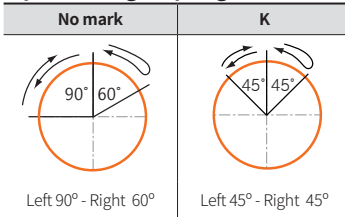
### 3-position two-way spring return



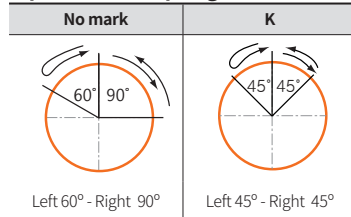
### 3-position maintained



### 3-position right spring return



### 3-position left spring return



## Ordering Information

This is only for reference. For selecting the specified Model, follow the Autonics website.

Model is based on control unit+block combination. Control units or blocks are sold separately. In case of block, refer to control switch accessories.

### ■ Non-illuminated

<b>S2SR</b>	<b>1</b>	-	<b>S</b>	<b>2</b>	<b>3</b>	<b>4</b>	<b>5</b>	<b>6</b>
Control unit							Block	

#### 1 Appearance

No mark: Standard lever

N: Shark-head lever

#### 2 Operation

Short lever	Long lever	Operation
<b>1</b>	<b>2</b>	2-position spring return
<b>3</b>	<b>4</b>	2-position maintained
<b>5</b>	<b>6</b>	3-position two-way spring return
<b>7</b>	<b>8</b>	3-position maintained
<b>A</b>	<b>B</b>	3-position right spring return
<b>C</b>	<b>D</b>	3-position left spring return

#### 3 Actuation angle

Refer to Actuation Angle.

#### 5 Contact block

A: 1 A contact

2A: 2 A contacts

B: 1 B contact

2B: 2 B contacts

AB: 1 A contact, 1 B contact

#### 4 Button color

R: Red

W: White

#### 6 Block

No mark: Singular type

M: Modular type

Model	Contact block		LED block	
	A contact	B contact	AC/DC voltage	AC voltage
S2SR-S1□A(M)	1	-		
S2SR-S1□2A(M)	2	-		
S2SR-S1□B(M)	-	1	-	-
S2SR-S1□2B(M)	-	2		
S2SR-S1□AB(M)	1	1		
S2SR-S3□A(M)	1	-		
S2SR-S3□2A(M)	2	-		
S2SR-S3□B(M)	-	1	-	-
S2SR-S3□2B(M)	-	2		
S2SR-S3□AB(M)	1	1		
S2SR-S5K□2A(M)	2	-		
S2SR-S5K□2B(M)	-	2	-	-
S2SR-S5K□AB(M)	1	1		
S2SR-S7K□2A(M)	2	-		
S2SR-S7K□2B(M)	-	2	-	-
S2SR-S7K□AB(M)	1	1		
S2SR-SAK□2A(M)	2	-		
S2SR-SAK□2B(M)	-	2	-	-
S2SR-SAK□AB(M)	1	1		
S2SR-SCK□2A(M)	2	-		
S2SR-SCK□2B(M)	-	2	-	-
S2SR-SCK□AB(M)	1	1		
S2SR-S5□2A(M)	2	-		
S2SR-S5□2B(M)	-	2	-	-
S2SR-S5□AB(M)	1	1		
S2SR-S7□2A(M)	2	-		
S2SR-S7□2B(M)	-	2	-	-
S2SR-S7□AB(M)	1	1		
S2SR-SA□2A(M)	2	-		
S2SR-SA□2B(M)	-	2	-	-
S2SR-SA□AB(M)	1	1		
S2SR-SC□2A(M)	2	-		
S2SR-SC□2B(M)	-	2	-	-
S2SR-SC□AB(M)	1	1		
S2SR-S2□A(M)	1	-		
S2SR-S2□2A(M)	2	-		
S2SR-S2□B(M)	-	1	-	-
S2SR-S2□2B(M)	-	2		
S2SR-S2□AB(M)	1	1		
S2SR-S4□A(M)	1	-		
S2SR-S4□2A(M)	2	-		
S2SR-S4□B(M)	-	1	-	-
S2SR-S4□2B(M)	-	2		
S2SR-S4□AB(M)	1	1		
S2SR-S6K□2A(M)	2	-		
S2SR-S6K□2B(M)	-	2	-	-
S2SR-S6K□AB(M)	1	1		
S2SR-S8K□2A(M)	2	-		
S2SR-S8K□2B(M)	-	2	-	-
S2SR-S8K□AB(M)	1	1		
S2SR-SBK□2A(M)	2	-		
S2SR-SBK□2B(M)	-	2	-	-
S2SR-SBK□AB(M)	1	1		
S2SR-SDK□2A(M)	2	-		
S2SR-SDK□2B(M)	-	2	-	-
S2SR-SDK□AB(M)	1	1		
S2SR-S6□2A(M)	2	-		
S2SR-S6□2B(M)	-	2	-	-
S2SR-S6□AB(M)	1	1		
S2SR-S8□2A(M)	2	-		
S2SR-S8□2B(M)	-	2	-	-
S2SR-S8□AB(M)	1	1		
S2SR-SB□2A(M)	2	-		
S2SR-SB□2B(M)	-	2	-	-
S2SR-SB□AB(M)	1	1		
S2SR-SD□2A(M)	2	-		
S2SR-SD□2B(M)	-	2	-	-
S2SR-SD□AB(M)	1	1		

Model	Contact block		LED block	
	A contact	B contact	AC/DC voltage	AC voltage
S2SRN-S1A□A(M)	1	-		
S2SRN-S1A□2A(M)	2	-		
S2SRN-S1A□B(M)	-	1	-	-
S2SRN-S1A□2B(M)	-	2		
S2SRN-S1A□AB(M)	1	1		
S2SRN-S3A□A(M)	1	-		
S2SRN-S3A□2A(M)	2	-		
S2SRN-S3A□B(M)	-	1	-	-
S2SRN-S3A□2B(M)	-	2		
S2SRN-S3A□AB(M)	1	1		
S2SRN-S1B□A(M)	1	-		
S2SRN-S1B□2A(M)	2	-		
S2SRN-S1B□B(M)	-	1	-	-
S2SRN-S1B□2B(M)	-	2		
S2SRN-S1B□AB(M)	1	1		
S2SRN-S3B□A(M)	1	-		
S2SRN-S3B□2A(M)	2	-		
S2SRN-S3B□B(M)	-	1	-	-
S2SRN-S3B□2B(M)	-	2		
S2SRN-S3B□AB(M)	1	1		
S2SRN-S1□A(M)	1	-		
S2SRN-S1□2A(M)	2	-		
S2SRN-S1□B(M)	-	1	-	-
S2SRN-S1□2B(M)	-	2		
S2SRN-S1□AB(M)	1	1		
S2SRN-S5K□2A(M)	2	-		
S2SRN-S5K□2B(M)	-	2	-	-
S2SRN-S5K□AB(M)	1	1		
S2SRN-S7K□2A(M)	2	-		
S2SRN-S7K□2B(M)	-	2	-	-
S2SRN-S7K□AB(M)	1	1		
S2SRN-SAK□2A(M)	2	-		
S2SRN-SAK□2B(M)	-	2	-	-
S2SRN-SAK□AB(M)	1	1		
S2SRN-SCK□2A(M)	2	-		
S2SRN-SCK□2B(M)	-	2	-	-
S2SRN-SCK□AB(M)	1	1		
S2SRN-S5□2A(M)	2	-		
S2SRN-S5□2B(M)	-	2	-	-
S2SRN-S5□AB(M)	1	1		
S2SRN-S7□2A(M)	2	-		
S2SRN-S7□2B(M)	-	2	-	-
S2SRN-S7□AB(M)	1	1		
S2SRN-SA□2A(M)	2	-		
S2SRN-SA□2B(M)	-	2	-	-
S2SRN-SA□AB(M)	1	1		
S2SRN-SC□2A(M)	2	-		
S2SRN-SC□2B(M)	-	2	-	-
S2SRN-SC□AB(M)	1	1		
S2SRN-S2A□A(M)	1	-		
S2SRN-S2A□2A(M)	2	-		
S2SRN-S2A□B(M)	-	1	-	-
S2SRN-S2A□2B(M)	-	2		
S2SRN-S2A□AB(M)	1	1		
S2SRN-S4A□A(M)	1	-		
S2SRN-S4A□2A(M)	2	-		
S2SRN-S4A□B(M)	-	1	-	-
S2SRN-S4A□2B(M)	-	2		
S2SRN-S4A□AB(M)	1	1		
S2SRN-S2B□A(M)	1	-		
S2SRN-S2B□2A(M)	2	-		
S2SRN-S2B□B(M)	-	1	-	-
S2SRN-S2B□2B(M)	-	2		
S2SRN-S2B□AB(M)	1	1		
S2SRN-S4B□A(M)	1	-		
S2SRN-S4B□2A(M)	2	-		
S2SRN-S4B□B(M)	-	1	-	-
S2SRN-S4B□2B(M)	-	2		
S2SRN-S4B□AB(M)	1	1		
S2SRN-S2□A(M)	1	-		
S2SRN-S2□2A(M)	2	-		
S2SRN-S2□B(M)	-	1	-	-
S2SRN-S2□2B(M)	-	2		
S2SRN-S2□AB(M)	1	1		

Model	Contact block		LED block	
	A contact	B contact	AC/DC voltage	AC voltage
S2SRN-S6K□2A(M)	2	-		
S2SRN-S6K□2B(M)	-	2	-	-
S2SRN-S6K□AB(M)	1	1		
S2SRN-S8K□2A(M)	2	-		
S2SRN-S8K□2B(M)	-	2	-	-
S2SRN-S8K□AB(M)	1	1		
S2SRN-SBK□2A(M)	2	-		
S2SRN-SBK□2B(M)	-	2	-	-
S2SRN-SBK□AB(M)	1	1		
S2SRN-SDK□2A(M)	2	-		
S2SRN-SDK□2B(M)	-	2	-	-
S2SRN-SDK□AB(M)	1	1		
S2SRN-S6□2A(M)	2	-		
S2SRN-S6□2B(M)	-	2	-	-
S2SRN-S6□AB(M)	1	1		
S2SRN-S8□2A(M)	2	-		
S2SRN-S8□2B(M)	-	2	-	-
S2SRN-S8□AB(M)	1	1		
S2SRN-SB□2A(M)	2	-		
S2SRN-SB□2B(M)	-	2	-	-
S2SRN-SB□AB(M)	1	1		
S2SRN-SD□2A(M)	2	-		
S2SRN-SD□2B(M)	-	2	-	-
S2SRN-SD□AB(M)	1	1		

■ Illuminated

<b>S2SR</b>	<b>N</b>	-	<b>L</b>	<b>1</b>	<b>2</b>	<b>3</b>	<b>4</b>	<b>5</b>	<b>6</b>
Control unit							Block		

**1 Operation**

Short lever	Long lever	Operation
<b>1</b>	<b>2</b>	2-position spring return
<b>3</b>	<b>4</b>	2-position maintained
<b>5</b>	<b>6</b>	3-position two-way spring return
<b>7</b>	<b>8</b>	3-position maintained
<b>A</b>	<b>B</b>	3-position right spring return
<b>C</b>	<b>D</b>	3-position left spring return

**2 Actuation angle**

Refer to Actuation Angle.

**4 Contact block**

A: 1 A contact  
 2A: 2 A contacts  
 B: 1 B contact  
 2B: 2 B contacts  
 AB: 1 A contact, 1 B contact

**3 Button color**

R: Red  
 B: Blue  
 G: Green  
 Y: Yellow

**5 LED block**

D: 1 AC/DC voltage type  
 L: 1 AC voltage type

**6 Block**

No mark: Singular type  
 M: Modular type

Model	Contact block		LED block	
	A contact	B contact	AC/DC voltage	AC voltage
S2SRN-L1A□AL(M)	1	-	-	-
S2SRN-L1A□2AL(M)	2	-	-	-
S2SRN-L1A□BL(M)	-	1	-	1
S2SRN-L1A□2BL(M)	-	2	-	-
S2SRN-L1A□ABL(M)	1	1	-	-
S2SRN-L3A□AL(M)	1	-	-	-
S2SRN-L3A□2AL(M)	2	-	-	-
S2SRN-L3A□BL(M)	-	1	-	1
S2SRN-L3A□2BL(M)	-	2	-	-
S2SRN-L3A□ABL(M)	1	1	-	-
S2SRN-L1B□AL(M)	1	-	-	-
S2SRN-L1B□2AL(M)	2	-	-	-
S2SRN-L1B□BL(M)	-	1	-	1
S2SRN-L1B□2BL(M)	-	2	-	-
S2SRN-L1B□ABL(M)	1	1	-	-
S2SRN-L3B□AL(M)	1	-	-	-
S2SRN-L3B□2AL(M)	2	-	-	-
S2SRN-L3B□BL(M)	-	1	-	1
S2SRN-L3B□2BL(M)	-	2	-	-
S2SRN-L3B□ABL(M)	1	1	-	-
S2SRN-L1□AL(M)	1	-	-	-
S2SRN-L1□2AL(M)	2	-	-	-
S2SRN-L1□BL(M)	-	1	-	1
S2SRN-L1□2BL(M)	-	2	-	-
S2SRN-L1□ABL(M)	1	1	-	-
S2SRN-L5K□2AL(M)	2	-	-	-
S2SRN-L5K□2BL(M)	-	2	-	1
S2SRN-L5K□ABL(M)	1	1	-	-
S2SRN-L7K□2AL(M)	2	-	-	-
S2SRN-L7K□2BL(M)	-	2	-	1
S2SRN-L7K□ABL(M)	1	1	-	-
S2SRN-LAK□2AL(M)	2	-	-	-
S2SRN-LAK□2BL(M)	-	2	-	1
S2SRN-LAK□ABL(M)	1	1	-	-
S2SRN-LCK□2AL(M)	2	-	-	-
S2SRN-LCK□2BL(M)	-	2	-	1
S2SRN-LCK□ABL(M)	1	1	-	-
S2SRN-L5□2AL(M)	2	-	-	-
S2SRN-L5□2BL(M)	-	2	-	1
S2SRN-L5□ABL(M)	1	1	-	-
S2SRN-L7□2AL(M)	2	-	-	-
S2SRN-L7□2BL(M)	-	2	-	1
S2SRN-L7□ABL(M)	1	1	-	-
S2SRN-LA□2AL(M)	2	-	-	-
S2SRN-LA□2BL(M)	-	2	-	1
S2SRN-LA□ABL(M)	1	1	-	-
S2SRN-LC□2AL(M)	2	-	-	-
S2SRN-LC□2BL(M)	-	2	-	1
S2SRN-LC□ABL(M)	1	1	-	-
S2SRN-L1A□AD(M)	1	-	-	-
S2SRN-L1A□2AD(M)	2	-	-	-
S2SRN-L1A□BD(M)	-	1	1	-
S2SRN-L1A□2BD(M)	-	2	-	-
S2SRN-L1A□ABD(M)	1	1	-	-
S2SRN-L3A□AD(M)	1	-	-	-
S2SRN-L3A□2AD(M)	2	-	-	-
S2SRN-L3A□BD(M)	-	1	1	-
S2SRN-L3A□2BD(M)	-	2	-	-
S2SRN-L3A□ABD(M)	1	1	-	-
S2SRN-L1B□AD(M)	1	-	-	-
S2SRN-L1B□2AD(M)	2	-	-	-
S2SRN-L1B□BD(M)	-	1	1	-
S2SRN-L1B□2BD(M)	-	2	-	-
S2SRN-L1B□ABD(M)	1	1	-	-
S2SRN-L3B□AD(M)	1	-	-	-
S2SRN-L3B□2AD(M)	2	-	-	-
S2SRN-L3B□BD(M)	-	1	1	-
S2SRN-L3B□2BD(M)	-	2	-	-
S2SRN-L3B□ABD(M)	1	1	-	-
S2SRN-L1□AD(M)	1	-	-	-
S2SRN-L1□2AD(M)	2	-	-	-
S2SRN-L1□BD(M)	-	1	1	-
S2SRN-L1□2BD(M)	-	2	-	-
S2SRN-L1□ABD(M)	1	1	-	-

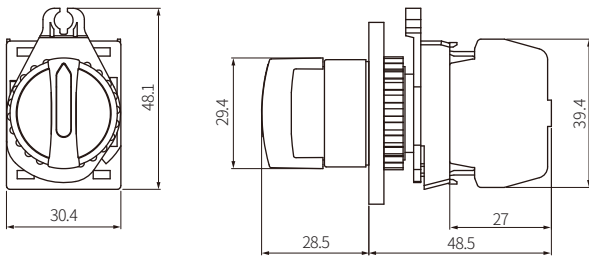
Model	Contact block		LED block	
	A contact	B contact	AC/DC voltage	AC voltage
S2SRN-L5K□2AD(M)	2	-	1	-
S2SRN-L5K□2BD(M)	-	2		
S2SRN-L5K□ABD(M)	1	1		
S2SRN-L7K□2AD(M)	2	-	1	-
S2SRN-L7K□2BD(M)	-	2		
S2SRN-L7K□ABD(M)	1	1		
S2SRN-LAK□2AD(M)	2	-	1	-
S2SRN-LAK□2BD(M)	-	2		
S2SRN-LAK□ABD(M)	1	1		
S2SRN-LCK□2AD(M)	2	-	1	-
S2SRN-LCK□2BD(M)	-	2		
S2SRN-LCK□ABD(M)	1	1		
S2SRN-L5□2AD(M)	2	-	1	-
S2SRN-L5□2BD(M)	-	2		
S2SRN-L5□ABD(M)	1	1		
S2SRN-L7□2AD(M)	2	-	1	-
S2SRN-L7□2BD(M)	-	2		
S2SRN-L7□ABD(M)	1	1		
S2SRN-LA□2AD(M)	2	-	1	-
S2SRN-LA□2BD(M)	-	2		
S2SRN-LA□ABD(M)	1	1		
S2SRN-LC□2AD(M)	2	-	1	-
S2SRN-LC□2BD(M)	-	2		
S2SRN-LC□ABD(M)	1	1		
S2SRN-L2A□AL(M)	1	-	-	1
S2SRN-L2A□2AL(M)	2	-		
S2SRN-L2A□BL(M)	-	1		
S2SRN-L2A□2BL(M)	-	2	-	1
S2SRN-L2A□ABL(M)	1	1		
S2SRN-L4A□AL(M)	1	-		
S2SRN-L4A□2AL(M)	2	-	-	1
S2SRN-L4A□BL(M)	-	1		
S2SRN-L4A□2BL(M)	-	2		
S2SRN-L4A□ABL(M)	1	1	-	1
S2SRN-L2B□AL(M)	1	-		
S2SRN-L2B□2AL(M)	2	-		
S2SRN-L2B□BL(M)	-	1	-	1
S2SRN-L2B□2BL(M)	-	2		
S2SRN-L2B□ABL(M)	1	1		
S2SRN-L4B□AL(M)	1	-	-	1
S2SRN-L4B□2AL(M)	2	-		
S2SRN-L4B□BL(M)	-	1		
S2SRN-L4B□2BL(M)	-	2	-	1
S2SRN-L4B□ABL(M)	1	1		
S2SRN-L2□AL(M)	1	-		
S2SRN-L2□2AL(M)	2	-	-	1
S2SRN-L2□BL(M)	-	1		
S2SRN-L2□2BL(M)	-	2		
S2SRN-L2□ABL(M)	1	1	-	1
S2SRN-L6K□2AL(M)	2	-		
S2SRN-L6K□2BL(M)	-	2		
S2SRN-L6K□ABL(M)	1	1	-	1
S2SRN-L8K□2AL(M)	2	-		
S2SRN-L8K□2BL(M)	-	2		
S2SRN-L8K□ABL(M)	1	1	-	1
S2SRN-LBK□2AL(M)	2	-		
S2SRN-LBK□2BL(M)	-	2		
S2SRN-LBK□ABL(M)	1	1	-	1
S2SRN-LDK□2AL(M)	2	-		
S2SRN-LDK□2BL(M)	-	2		
S2SRN-LDK□ABL(M)	1	1	-	1
S2SRN-L6□2AL(M)	2	-		
S2SRN-L6□2BL(M)	-	2		
S2SRN-L6□ABL(M)	1	1	-	1
S2SRN-L8□2AL(M)	2	-		
S2SRN-L8□2BL(M)	-	2		
S2SRN-L8□ABL(M)	1	1	-	1
S2SRN-LB□2AL(M)	2	-		
S2SRN-LB□2BL(M)	-	2		
S2SRN-LB□ABL(M)	1	1	-	1
S2SRN-LD□2AL(M)	2	-		
S2SRN-LD□2BL(M)	-	2		
S2SRN-LD□ABL(M)	1	1	-	1

Model	Contact block		LED block	
	A contact	B contact	AC/DC voltage	AC voltage
S2SRN-L2A□AD(M)	1	-	1	-
S2SRN-L2A□2AD(M)	2	-		
S2SRN-L2A□BD(M)	-	1		
S2SRN-L2A□2BD(M)	-	2	1	-
S2SRN-L2A□ABD(M)	1	1		
S2SRN-L4A□AD(M)	1	-		
S2SRN-L4A□2AD(M)	2	-	1	-
S2SRN-L4A□BD(M)	-	1		
S2SRN-L4A□2BD(M)	-	2		
S2SRN-L4A□ABD(M)	1	1	1	-
S2SRN-L2B□AD(M)	1	-		
S2SRN-L2B□BD(M)	-	1		
S2SRN-L2B□2BD(M)	-	2	1	-
S2SRN-L2B□ABD(M)	1	1		
S2SRN-L4B□AD(M)	1	-		
S2SRN-L4B□2AD(M)	2	-	1	-
S2SRN-L4B□BD(M)	-	1		
S2SRN-L4B□2BD(M)	-	2		
S2SRN-L4B□ABD(M)	1	1	1	-
S2SRN-L2□AD(M)	1	-		
S2SRN-L2□2AD(M)	2	-		
S2SRN-L2□BD(M)	-	1	1	-
S2SRN-L2□2BD(M)	-	2		
S2SRN-L2□ABD(M)	1	1		
S2SRN-L6K□2AD(M)	2	-	1	-
S2SRN-L6K□2BD(M)	-	2		
S2SRN-L6K□ABD(M)	1	1		
S2SRN-L8K□2AD(M)	2	-	1	-
S2SRN-L8K□2BD(M)	-	2		
S2SRN-L8K□ABD(M)	1	1		
S2SRN-LBK□2AD(M)	2	-	1	-
S2SRN-LBK□2BD(M)	-	2		
S2SRN-LBK□ABD(M)	1	1		
S2SRN-LDK□2AD(M)	2	-	1	-
S2SRN-LDK□2BD(M)	-	2		
S2SRN-LDK□ABD(M)	1	1		
S2SRN-L6□2AD(M)	2	-	1	-
S2SRN-L6□2BD(M)	-	2		
S2SRN-L6□ABD(M)	1	1		
S2SRN-L8□2AD(M)	2	-	1	-
S2SRN-L8□2BD(M)	-	2		
S2SRN-L8□ABD(M)	1	1		
S2SRN-LB□2AD(M)	2	-	1	-
S2SRN-LB□2BD(M)	-	2		
S2SRN-LB□ABD(M)	1	1		
S2SRN-LD□2AD(M)	2	-	1	-
S2SRN-LD□2BD(M)	-	2		
S2SRN-LD□ABD(M)	1	1		

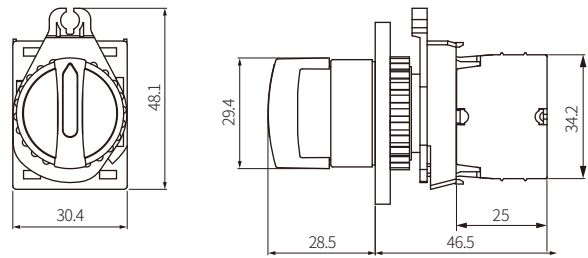
## Dimensions

- Unit: mm, For the detailed drawings, follow the Autonics website.
- Panel thickness:  $\leq 6$  mm

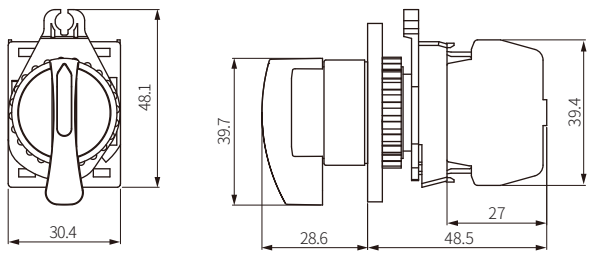
### ■ S2SR-S1/3/5/7/A/C □ (standard / short lever, singular type block)



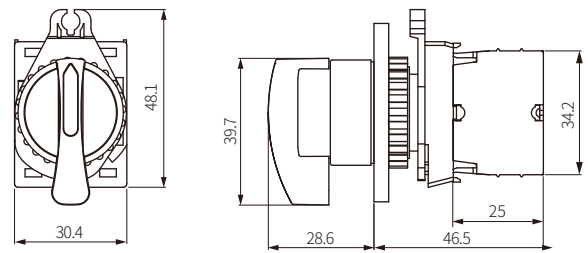
### ■ S2SR-S1/3/5/7/A/C □ M (standard / short lever, modular type block)



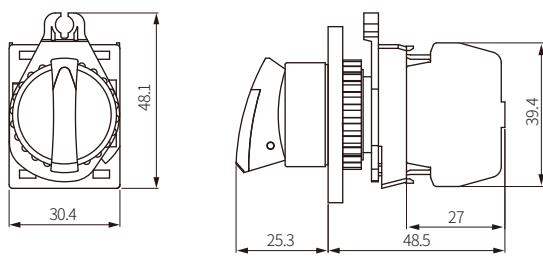
### ■ S2SR-S2/4/6/8/B/D □ (standard / long lever, singular type block)



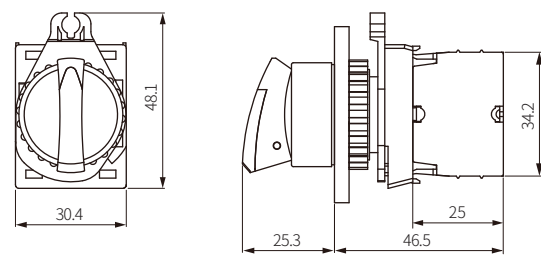
### ■ S2SR-S2/4/6/8/B/D □ M (standard / long lever, modular type block)



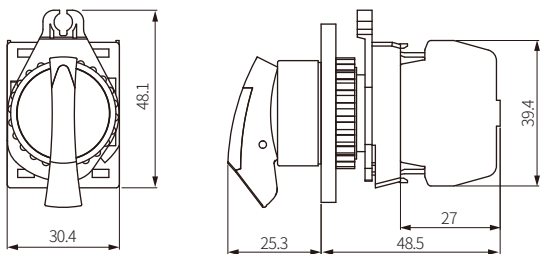
### ■ S2SRN-□1/3/5/7/A/C □ (shark-head / short lever, singular type block)



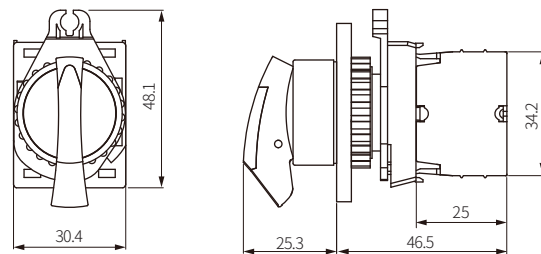
### ■ S2SRN-□1/3/5/7/A/C □ M (shark-head / short lever, modular type block)



### ■ S2SRN-□2/4/6/8/B/D □ (shark-head / long lever, singular type block)

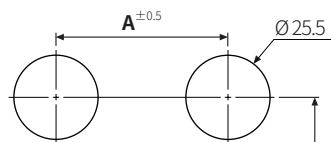


### ■ S2SRN-□2/4/6/8/B/D □ M (shark-head / long lever, modular type block)

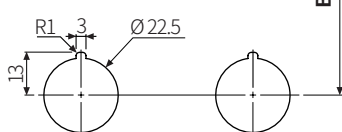


### ■ Panel cut-out

<Mounting round:  $\varnothing 25$ >







<Mounting round:  $\varnothing 22$ >






	A	B
Short lever	$\geq 33$	$\geq 55$
Long lever	$\geq 55$	$\geq 55$

# Ø 22/25 mm, Ø 30 mm, □ 30 mm Control Switches Accessories

## Contact Blocks (SA□ -C□ □ )

Model	Contact	Features	Applied switches	Appearance
SA-CAM	A contact (normally open)	<ul style="list-style-type: none"> <li>Modular type</li> <li>Ring / Fork terminal available</li> <li>Modular connection (up to 3 units)</li> </ul>	Ø 22/25 mm, Ø 30 mm, □ 30 mm Control switches	
SA-CBM	B contact (normally closed)			
SA-CA	A contact (normally open)	<ul style="list-style-type: none"> <li>Singular type (dust-resistant contact point)</li> <li>Fork terminal available</li> <li>Loose screw prevention</li> </ul>		
SA-CB	B contact (normally closed)			





<b>Power supply / current</b>	110 VAC~ / 10 A, 250 VAC~ / 6 A
<b>Dielectric strength</b>	2,500 VAC~ 50/60 Hz for 1 minute
<b>Insulation resistance</b>	≥ 1,000 MΩ (500 VDC≡ megger)
<b>Contact resistance</b>	≤ 20 mΩ (initial)
<b>Electrical life cycle</b>	≥ 100,000 operations (20 operations/min)
<b>Contact material</b>	AgNi10
<b>Approval</b>	CE   
<b>Weight</b>	Modular type: ≈ 10 g, Singular type: ≈ 11 g

### Removal

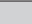
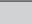
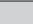
Separate the unit using a flat-head (-) screwdriver.



## LED Blocks (SA□ -L□ □ )

Model	Power supply	Features	Applied switches	Appearance
SA-LD□ M	AC/DC voltage type 12-24 VAC~ 50/60 Hz 12-24 VDC≡	<ul style="list-style-type: none"> <li>Modular type</li> <li>Ring / Fork terminal available</li> <li>Modular connection (up to 3 units)</li> </ul>	Ø 22/25 mm, Ø 30 mm, □ 30 mm Control switches, Pilot lights	
SA-LA□ M	AC voltage type 110-220 VAC~ 50/60 Hz			
SA-LD□	AC/DC voltage type 12-24 VAC~ 50/60 Hz 12-24 VDC≡	<ul style="list-style-type: none"> <li>Singular type (dust-resistant contact point)</li> <li>Fork terminal available</li> <li>Loose screw prevention</li> </ul>		
SA-LA□	AC voltage type 110-220 VAC~ 50/60 Hz			

□ : Color (R: Red / B: Blue / G: Green / Y: Yellow / W: White)


<b>Rated voltage</b>	AC/DC voltage type: 12-24 VAC~ 50/60 Hz, 12-24 VDC≡ AC voltage type: 110-220 VAC~ 50/60 Hz
<b>Current consumption</b>	≤ 20 mA
<b>Approval</b>	CE   
<b>Weight</b>	AC/DC voltage type: ≈ 11 g, AC voltage type: ≈ 12 g

### Removal

Separate the unit using a flat-head (-) screwdriver. Same as contact removal method.

## Locking Handle (SA□ -LH)

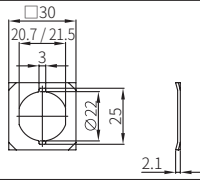

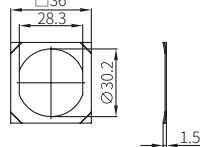

• For locking switch nuts behind the panels.

Model	Applied switches	Appearance
SA-LH	Ø 22/25 mm, Ø 30 mm, □ 30 mm Control switches, Pilot lights <sup>01)</sup>	

01) Except Ø 30 mm round pressure switches (extended).

## Switch Washer (SA-SW□ )

• The washer helps to improve switch tightening force.  
• Unit: mm, For the detailed drawings, follow the Autonics web site.

Model	Applied switches	Dimensions	Appearance
SA-SW2	Ø 22/25 mm Control switches, Pilot lights		
SA-SW3	Ø 30 mm Control switches, Pilot lights		



## Switch Enclosures (SA-□ B□)

Model	Shape	Applied switches	Appearance
SA-SB□	Square	Ø 22/25 mm Control switches	
SA-TB□	Triangle		

□ : Number of holes (1 to 5)

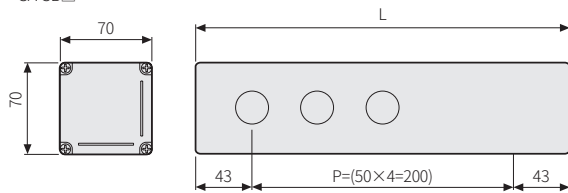
You can order the other size and the number of holes.

### ■ Dimensions

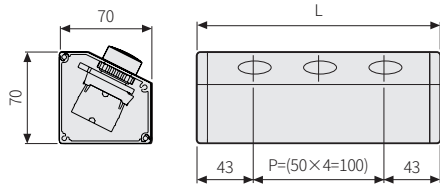
Unit: mm, For the detailed drawings, follow the Autonics web site.

Model	Holes	L
SA-□ B1	1	86
SA-□ B2	2	136
SA-□ B3	3	186
SA-□ B4	4	236
SA-□ B5	5	286

• SA-SB□



• SA-TB□



## Switch Waterproof Cap (SA-W□)

- IP65 protection structure with waterproof cap
- Unit: mm, For the detailed drawings, follow the Autonics web site.

Model	Applied switches	Dimensions	Appearance
SA-WP	Ø 22/25 mm Round non-illuminated / extended push button switches		
SA-WL	Ø 22/25 mm Round illuminated / extended push button switches		

## Emergency Switch Nameplates (SA-N□)

- Unit: mm, For the detailed drawings, follow the Autonics web site.
- Standard color is yellow. Luminous nameplates are optional.

Model	Applied switches	Appearance
SA-NS	Ø 22/25 mm Emergency switches <sup>01)</sup>	<ul style="list-style-type: none"> <li>• D60 × d25</li> </ul>
SA-NL	Ø 22/25 mm Emergency switches	<ul style="list-style-type: none"> <li>• D80 × d25</li> </ul>

01) Except Ø 22/25 mm Emergency switch D60.

## Emergency Switch Protective Shrouds (SA-EG□)

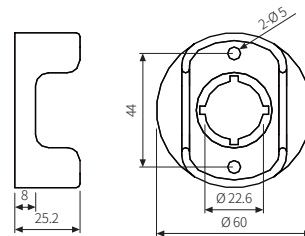
- Protective shrouds to prevent accidental/incorrect operation.

Model	Applied switches	Appearance
SA-EG1	Ø 22/25 mm Emergency switches <sup>01)</sup>	
SA-EG2 / SA-EG3		

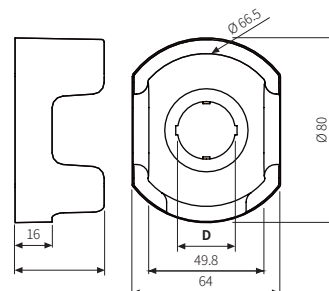
01) Except Ø 22/25 mm Emergency switch D60.

### ■ Dimensions

- Unit: mm, For the detailed drawings, follow the Autonics web site.
- SA-EG1



- SA-EG2 / EG3



Model	D
SA-EG2	Ø 22.5
SA-EG3	Ø 25.5