

# IMM

Inductive miniature sensors for industrial use

**SICK**  
Sensor Intelligence.

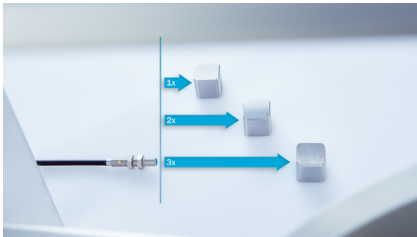
Advantages



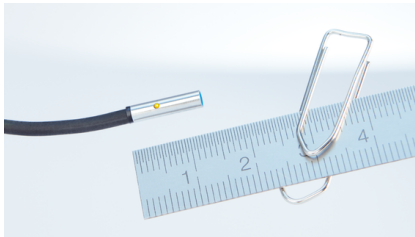
**Maximum sensing ranges for great freedom in machine design**

Minimal space requirements thanks to the tiny dimensions are what characterize the IMM miniature sensors from SICK. And they make no compromises when it comes to performance. With their large sensing ranges of up to 6 mm, they IMM ensure stable processes and detect objects from a safe distance. The combination of a large sensing range and minimal space requirements increases freedom for machine design as well as the field of application of the sensors. This means not only can non-ferrous metals be detected at long distances, but the sensors can also be used where currently only larger sensors are deployed due to the required sensing ranges.

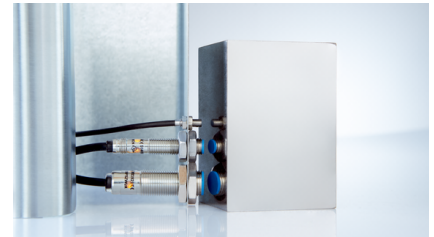
**Perfectly suited for applications with tight installation space but high standards on the sensing range.**



Thanks to the threefold sensing ranges of up to 6 mm, the IMM sensors detect every object from a safe distance.



The smallest IMM sensors are only 12 mm long and have a diameter of just 3 mm: This is how IMM sensors can fit in such small installation spaces.



Minimum space requirements of the sensors in the M8 and M12 sizes without compromises in the sensing range.



**Stable processes and high flexibility in machine design thanks to large sensing ranges and compact miniature design**



## Fast, easy and safe installation

With IMM sensors, you save valuable time when installing the sensors, thereby increasing your productivity. Thanks to the visual adjustment indicator, you have a simple way to ensure reliable sensor function during operation. The high tightening torques and the specially-designed mounting accessories facilitate sensor mounting and ensure permanent and secure assembly. In addition, the IMM are equipped with IO-Link version 1.1. In addition to simple sensor diagnostics and easy access to data, this also supports the assembly process. Device exchange and identification therefore only takes a few seconds, and considerably less wiring work is required thanks to integration into the PLC system via remote IO-Link master modules.

## Huge time savings during installation thanks to additional functions and accessories



Visual adjustment indicator: the LED signalizes when the secured sensing range has been reached.



Reinforced V2A housing for high tightening torques as well as associated mounting accessories make mounting even easier and more secure.



IO-Link: simple device exchange and quick device identification, minimal wiring effort and easy sensor diagnostics as well as easy access to data.



**Thanks to the visual adjustment indicator, IO-Link as well as the associated accessories, installation of IMM sensors is quick and easy.**



## The best choice for highly dynamic handling and assembly processes

In addition to the compact size, the high positioning accuracy and precise switching behavior are the most significant requirements in handling and assembly processes. The IMM sensors with high switching frequency, high repeatability and stable switching signals fulfill these requirements unconditionally. While large sensors often reach their limits with very small objects, IMM devices reliably detect even small objects and are therefore optimally suited for the detection of the tiniest components in supply processes. The low weight of the sensors enables fast acceleration of moving components. A flexible cable is also available on request, which means that highly dynamic processes with several movement cycles per day are no longer a challenge.



High positioning accuracy and precise switching behavior for reliable detection of fast processes.



High detection sensitivity makes possible the detection of small objects such as wires, nuts and screws.



The low weight and flexible cables enable fast acceleration and high bending stresses in dynamic handling processes (flexible cable available on request).



**IMM sensors are perfectly designed for handling and assembly applications**



## Technical data overview

<b>Housing</b>	Cylindrical / Metric (depending on type)
<b>Thread size</b>	M4 x 0.5 M5 x 0.5
<b>Housing diameter</b>	Ø 3 mm ... Ø 6.5 mm (depending on type)
<b>Sensing range <math>S_n</math></b>	0.6 mm ... 6 mm (depending on type)
<b>Electrical wiring</b>	DC 3-wire
<b>Housing material</b>	Stainless steel V2A
<b>Enclosure rating</b>	IP68 / IP69K / IP67 (depending on type)
<b>Housing</b>	Cylindrical / Metric (depending on type)
<b>Thread size</b>	M4 x 0.5 M5 x 0.5
<b>Housing diameter</b>	Ø 3 mm ... Ø 6.5 mm (depending on type)
<b>Sensing range <math>S_n</math></b>	0.6 mm ... 6 mm (depending on type)
<b>Electrical wiring</b>	DC 3-wire
<b>Housing material</b>	Stainless steel V2A
<b>Enclosure rating</b>	IP68 / IP69K / IP67 (depending on type)

## Product description

Minimal space requirements paired with maximum performance characterize the IMM inductive proximity sensors. They allow the highest level of miniaturization without compromise. Thanks to the 3-fold sensing range up to 6 mm, IMM devices detect objects from a greater distance than before. Due to their small size, low weight and quick and precise switching behavior, the IMM sensors are ideal for highly dynamic handling and assembly processes. State-of-the-art ASIC technology enables the integration of a visual adjustment indicator as well as communication via IO-Link, version 1.1. This saves time for commissioning, reduces installation errors and turns the sensors into suppliers of data for future automation applications at the same time.

## At a glance

- Design: M4 to M5, diameter: 3 mm to 6.5 mm
- Extended sensing ranges: 0.6 mm to 6 mm
- Electrical configuration: DC, 3-wire
- Enclosure rating: IP67
- Temperature range: -25 °C to +70 °C
- Rugged stainless-steel housing, plastic sensing face
- 3-fold sensing ranges, visual adjustment indicator, IO-Link communication

## Your benefits

- Space-saving installation and significant flexibility in machine design thanks to the compact size
- High positioning accuracy and precise switching behavior for reliable detection of fast handling and assembly processes
- Stable processes and high plant availability thanks to 3-fold sensing range
- High detection sensitivity makes possible reliable detection of small objects
- High degree of flexibility and communication options thanks to IO-Link
- Simple mounting thanks to visual adjustment indicator
- The low weight of the sensor enables fast acceleration in dynamic handling processes

## Fields of application

- Handling, assembly processes: positioning
- Supply processes: detecting tiny components, counting
- Small waves: speed monitoring, direction of movement detection
- Gripper: position detection (gripper open or closed)
- Linear or rotating gripper: positioning
- CNC workpiece changer and spindles: position detection

## Ordering information

Other models and accessories → [www.sick.com/IMM](http://www.sick.com/IMM)

- **Sub product family:** IH03
- **Installation type:** flush
- **Electrical wiring:** DC 3-wire

Sensing range S <sub>n</sub>	Housing	Switching output	Output function	Connection type	Type	Part no.
0.6 mm	Standard design	NPN	NO	Cable, 3-wire, 2 m	IH03-0B6NS-VU1	6020142
		PNP	NC	Cable, 3-wire, 2 m	IH03-0B6PO-VU1	6020143
			NO	Cable with connector M8, 3-pin, with knurled nuts, 0.2 m	IH03-0B6PS-VR1	6038602
		Cable, 3-wire, 2 m		IH03-0B6PS-VU1	6020141	
		Cable, 3-wire, 5 m		IH03-0B6PS-VUB	6020630	
0.8 mm	Short-body	NPN	NO	Cable, 3-wire, 2 m <sup>1)</sup>	IHP03-0B8NSVU2K	6058032
		PNP	NO	Cable, 3-wire, 2 m <sup>1)</sup>	IHP03-0B8PSVU2K	6058033
1 mm	Short-body	NPN	NO	Cable with connector M8, 3-pin, 0.2 m <sup>1)</sup>	IH03-01BNSVR8K	6058026
				Cable, 3-wire, 2 m <sup>1)</sup>	IH03-01BNSVU2K	6058024
		PNP	NO	Cable with connector M8, 3-pin, 0.2 m <sup>1)</sup>	IH03-01BPSVR8K	6058027
				Cable, 3-wire, 2 m <sup>1)</sup>	IH03-01BPSVU2K	6058025

<sup>1)</sup> Do not bend below 0 °C.

- **Sub product family:** IM04
- **Cylindrical thread design:** M4
- **Installation type:** flush
- **Electrical wiring:** DC 3-wire

Sensing range $S_n$	Housing	Switching output	Output function	Connection type	Type	Part no.
0.6 mm	Standard design	NPN	NO	Cable, 3-wire, 2 m <sup>1)</sup>	IM04-0B6NS-ZU1	6020146
		PNP	NC	Cable, 3-wire, 2 m <sup>1)</sup>	IM04-0B6PO-ZU1	6020147
			NO	Cable with connector M8, 3-pin, with knurled nuts, 0.2 m <sup>1)</sup>	IM04-0B6PS-ZR1	6042085
		Cable, 3-wire, 2 m <sup>1)</sup>		IM04-0B6PS-ZU1	6020145	
		Cable, 3-wire, 5 m <sup>1)</sup>		IM04-0B6PS-ZUB	6020610	
1 mm	Short-body	NPN	NO	Cable with connector M8, 3-pin, 0.2 m <sup>1)</sup>	IM04-01BNSVR8K	6058030
				Cable, 3-wire, 2 m <sup>1)</sup>	IM04-01BNSVU2K	6058028
		PNP	NO	Cable with connector M8, 3-pin, 0.2 m <sup>1)</sup>	IM04-01BPSVR8K	6058031
				Cable, 3-wire, 2 m <sup>1)</sup>	IM04-01BPSVU2K	6058029

<sup>1)</sup> Do not bend below 0 °C.

- **Sub product family:** IH04
- **Installation type:** flush
- **Electrical wiring:** DC 3-wire
- **Sensing range  $S_n$ :** 0.8 mm
- **Housing:** Standard design
- **Output function:** NO

Switching output	Connection type	Type	Part no.
NPN	Cable, 3-wire, 2 m	IH04-0B8NS-VW1	6020149
	Connector M8, 3-pin	IH04-0B8NS-VT1	6020152
PNP	Cable with connector M8, 3-pin, 0.2 m	IH04-0B8PS-VR1	6045178
	Cable, 3-wire, 2 m	IH04-0B8PS-VW1	6020113
	Cable, 3-wire, 85 mm	IH04-0B8PS-VUD	6054677
	Connector M8, 3-pin	IH04-0B8PS-VT1	6020114



- **Sub product family:** IM05
- **Cylindrical thread design:** M5
- **Installation type:** flush
- **Electrical wiring:** DC 3-wire
- **Housing:** Standard design

Sensing range S <sub>n</sub>	Switching output	Output function	Special features	Connection type	Type	Part no.		
0.8 mm	NPN	NC	-	Cable, 3-wire, 2 m	IM05-0B8NO-ZW1	6020157		
		NO	-	Cable, 3-wire, 2 m	IM05-0B8NS-ZW1	6020155		
				Connector M8, 3-pin	IM05-0B8NS-ZT1	6020158		
				Temperature resistance	Cable, 3-wire, 2 m	IM05-0B8NSVS2SS01	6066461	
	PNP	NC	-	Connector M8, 3-pin	IM05-0B8PO-ZT1	6020159		
		NO	-	Cable, 3-wire, 2 m	IM05-0B8PS-ZW1	6011591		
				Cable, 3-wire, 5 m	IM05-0B8PS-ZWB	6021575		
				Connector M8, 3-pin	IM05-0B8PS-ZT1	6020110		
		1.5 mm	NPN	NC	-	Cable, 3-wire, 2 m	IM05-1B5NOVU2S	6049734
						Connector M8, 3-pin	IM05-1B5NOVT0S	6049738
NO	Cable, 3-wire, 2 m			IM05-1B5NSVU2S		6049733		
	Connector M8, 3-pin			IM05-1B5NSVT0S		6049737		
PNP	NC		-	Cable, 3-wire, 2 m	IM05-1B5POVU2S	6049736		
				Connector M8, 3-pin	IM05-1B5POVT0S	6049740		
	NO			Cable with connector M8, 3-pin, with knurled nuts, 0.2 m	IM05-1B5PSVR8S	6069347		
				Cable with connector M8, 3-pin, with knurled nuts, 0.3 m	IM05-1B5PSVR9S	6069466		
				Cable, 3-wire, 2 m	IM05-1B5PSVU2S	6049735		
				Connector M8, 3-pin	IM05-1B5PSVT0S	6049739		



- **Sub product family:** IH06
- **Installation type:** flush
- **Electrical wiring:** DC 3-wire

Sensing range $S_n$	Housing	Switching output	Output function	Connection type	Type	Part no.
1.5 mm	Extremely short model	NPN	NO	Cable, 3-wire, 2 m	IH06-1B5NS-VWK	6020166
				Connector M8, 3-pin	IH06-1B5NS-VTK	6020170
		PNP	NC	Cable, 3-wire, 2 m	IH06-1B5PO-VWK	6020167
				Connector M8, 3-pin	IH06-1B5PO-VTK	6020171
		NO	NO	Cable, 3-wire, 2 m	IH06-1B5PS-VWK	6020165
				IH06-1B5PS-VWXS01	6033574	
Connector M8, 3-pin	IH06-1B5PS-VTK	6020169				
2 mm	Standard design	PNP	NO	Connector M8, 3-pin	IH06-02BPS-VTQ	6025690

- **Sub product family:** IH06
- **Installation type:** quasi-flush
- **Electrical wiring:** DC 3-wire
- **Sensing range  $S_n$ :** 2 mm

Housing	Switching output	Output function	Connection type	Type	Part no.
Standard design	NPN	NO	Cable, 3-wire, 2 m	IH06-02BNS-VW1	7900178
			Connector M8, 3-pin	IH06-02BNS-VT1	7900180
	PNP	NC	Connector M8, 3-pin	IH06-02BPO-VT1	1016857
			NO	Cable, 3-wire, 2 m	IH06-02BPS-VW1
	Connector M8, 3-pin	IH06-02BPS-VT1		7900179	
	Short-body	NPN	NO	Cable, 3-wire, 2 m	IH06-02BNS-VWK
Connector M8, 3-pin				IH06-02BNS-VTK	6025878
PNP		NC	Connector M8, 3-pin	IH06-02BPO-VTK	6025879
			NO	Cable, 3-wire, 2 m	IH06-02BPS-VWK
Connector M8, 3-pin		IH06-02BPS-VTK		6025877	

- **Sub product family:** IH06
- **Installation type:** non-flush
- **Electrical wiring:** DC 3-wire
- **Sensing range  $S_n$ :** 4 mm

Housing	Switching output	Output function	Connection type	Type	Part no.
Standard design	NPN	NO	Cable, 3-wire, 2 m	IH06-04NNS-VW1	7900182
			Connector M8, 3-pin	IH06-04NNS-VT1	7900183
	PNP	NO	Cable, 3-wire, 2 m	IH06-04NPS-VW1	7900181

Housing	Switching output	Output function	Connection type	Type	Part no.	
Short-body	NPN	NO	Cable, 3-wire, 2 m	IH06-04NNS-VWK	6025881	
			Connector M8, 3-pin	IH06-04NNS-VTK	6025883	
	PNP	NC	Connector M8, 3-pin	IH06-04NPO-VTK	6025884	
			NO	Cable, 3-wire, 2 m	IH06-04NPS-VWK	6025880
				Connector M8, 3-pin	IH06-04NPS-VTK	6025882

- **Sub product family:** IHM03
- **Installation type:** flush
- **Electrical wiring:** DC 3-wire

Sensing range $S_n$	Housing	Switching output	Output function	Special features	Connection type	Type	Part no.	
0.6 mm	Standard design	NPN	NC	Visual adjustment indicator	Cable, 3-wire, 2 m	IHM03-0B6NOVU2S	1114508	
			NO	Visual adjustment indicator	Cable, 3-wire, 2 m	IHM03-0B6NSVU2S	1103991	
		PNP	NC	Visual adjustment indicator	Cable, 3-wire, 2 m	IHM03-0B6POVU2S	1111250	
			NO	Visual adjustment indicator, IO-Link	Cable with connector M8, 3-pin, 0.2 m	IHM03-0B6PSVR8S	1108736	
					Cable, 3-wire, 2 m	IHM03-0B6PSVU2S	1102476	
1 mm	Standard design	PNP	NC	Visual adjustment indicator	Cable with connector M8, 3-pin, 0.2 m	IHM03-01BPOVR8S	1144067	
					Cable, 3-wire, 2 m	IHM03-01BPOVU2S	1111251	
			NO	Visual adjustment indicator, IO-Link	Cable with connector M8, 3-pin, 0.2 m	IHM03-01BPSVR8S	1108737	
		Cable, 3-wire, 2 m			IHM03-01BPSVU2S	1097305		
		Short-body			NPN	NO	Visual adjustment indicator	Cable with connector M8, 3-pin, 0.2 m
			Cable, 3-wire, 2 m	IHM03-01BNSVU2K				1111030
	PNP		NO	Visual adjustment indicator, IO-Link	2 x cable with 1 x male connector, M8, 4-pin, 0.3 m	IHM03-01BPSVR9KS01	1138376	
	Short-body	PNP	NO	Visual adjustment indicator, IO-Link	Cable with connector M8, 3-pin, 0.2 m	IHM03-01BPSVR8K	1108735	
					Cable, 3-wire, 2 m	IHM03-01BPSVU2K	1101607	

- **Sub product family:** IHM03
- **Installation type:** quasi-flush
- **Electrical wiring:** DC 3-wire
- **Sensing range  $S_n$ :** 1.5 mm
- **Output function:** NO
- **Connection type:** Cable, 3-wire, 2 m

Housing	Switching output	Special features	Type	Part no.
Standard design	NPN	Visual adjustment indicator, triple sensing range	IHM03-1B5NSVU2S	1103993
	PNP	Visual adjustment indicator, IO-Link, triple sensing range	IHM03-1B5PSVU2S	1103564
Short-body	NPN	Visual adjustment indicator, triple sensing range	IHM03-1B5NSVU2K	1103990
	PNP	Visual adjustment indicator, IO-Link, triple sensing range	IHM03-1B5PSVU2K	1108725

- **Sub product family:** IMM04
- **Cylindrical thread design:** M4
- **Installation type:** flush
- **Electrical wiring:** DC 3-wire

Sensing range $S_n$	Housing	Switching output	Output function	Special features	Connection type	Type	Part no.
0.6 mm	Standard design	NPN	NC	Visual adjustment indicator	Cable, 3-wire, 2 m	IMM04-0B6NOVU2S	1114510
			NO	Visual adjustment indicator	Cable, 3-wire, 2 m	IMM04-0B6NSVU2S	1114509
		PNP	NC	Visual adjustment indicator	Cable, 3-wire, 2 m	IMM04-0B6POVU2S	1111252
			NO	Visual adjustment indicator, IO-Link	Cable with connector M8, 3-pin, 0.2 m	IMM04-0B6PSVR8S	1108739
					Cable, 3-wire, 2 m	IMM04-0B6PSVU2S	1103630
1 mm	Standard design	NPN	NO	Visual adjustment indicator	Cable, 3-wire, 2 m	IMM04-01BNSVU2S	1105618
			PNP	NC	Visual adjustment indicator	Cable, 3-wire, 2 m	IMM04-01BP0VU2S
		NO		Visual adjustment indicator, IO-Link	Cable with connector M8, 3-pin, 0.2 m	IMM04-01BPSVR8S	1108740
					Cable, 3-wire, 2 m	IMM04-01BPSVU2S	1101613
		Short-body	NPN	NO	Visual adjustment indicator	Cable with connector M8, 3-pin, 0.2 m	IMM04-01BNSVR8K
	Cable, 3-wire, 2 m					IMM04-01BNSVU2K	1103233
	PNP		NO	Visual adjustment indicator, IO-Link	Cable with connector M8, 3-pin, 0.2 m	IMM04-01BPSVR8K	1108738
					Cable, 3-wire, 2 m	IMM04-01BPSVR8KS05	1140563
					Cable, 3-wire, 2 m	IMM04-01BPSVU2K	1101614

- **Sub product family:** IMM04
- **Cylindrical thread design:** M4
- **Installation type:** quasi-flush
- **Electrical wiring:** DC 3-wire
- **Sensing range  $S_n$ :** 1.5 mm
- **Output function:** NO
- **Connection type:** Cable, 3-wire, 2 m

Housing	Switching output	Special features	Type	Part no.
Standard design	NPN	Visual adjustment indicator, triple sensing range	IMM04-1B5NSVU2S	1103994
	PNP	Visual adjustment indicator, IO-Link, triple sensing range	IMM04-1B5PSVU2S	1103631
Short-body	NPN	Visual adjustment indicator, triple sensing range	IMM04-1B5NSVU2K	1103988
	PNP	Visual adjustment indicator, IO-Link, triple sensing range	IMM04-1B5PSVU2K	1103989

- **Sub product family:** IHM04
- **Installation type:** flush
- **Electrical wiring:** DC 3-wire

Sensing range $S_n$	Housing	Switching output	Output function	Special features	Connection type	Type	Part no.	
0.8 mm	Standard design	NPN	NO	Visual adjustment indicator	Cable, 3-wire, 2 m	IHM04-0B8NSVU2S	1105839	
					Connector M8, 3-pin	IHM04-0B8NSVT0S	1107983	
		PNP	NC	Visual adjustment indicator	Cable, 3-wire, 2 m	IHM04-0B8POVU2S	1114512	
					Cable with connector M8, 3-pin, 0.2 m	IHM04-0B8PSVR8S	1107732	
						Cable, 3-wire, 2 m	IHM04-0B8PSVU2S	1101824
						Connector M8, 3-pin	IHM04-0B8PSVT0S	1103977

Sensing range $S_n$	Housing	Switching output	Output function	Special features	Connection type	Type	Part no.
1.5 mm	Standard design	NPN	NO	Visual adjustment indicator	Cable, 3-wire, 2 m	IHM04-1B5NSVU2S	1101903
					Connector M8, 3-pin	IHM04-1B5NSVT0S	1107920
		PNP	NO	Visual adjustment indicator, IO-Link	Cable with connector M8, 3-pin, 0.2 m	IHM04-1B5PSVR8S	1108728
					Cable, 3-wire, 2 m	IHM04-1B5PSVU2S	1096869
	Connector M8, 3-pin				IHM04-1B5PSVT0S	1097330	
	Short-body	NPN	NO	Visual adjustment indicator	Cable, 3-wire, 2 m	IHM04-1B5NSVU2K	1103992
					PNP	NO	Visual adjustment indicator, IO-Link
		Cable, 3-wire, 2 m	IHM04-1B5PSVU2K	1101608			

- **Sub product family:** IHM04
- **Installation type:** quasi-flush
- **Electrical wiring:** DC 3-wire
- **Sensing range  $S_n$ :** 2.5 mm
- **Output function:** NO

Housing	Switching output	Special features	Connection type	Type	Part no.
Standard design	NPN	Visual adjustment indicator, triple sensing range	Connector M8, 3-pin	IHM04-2B5NSVT0S	1103995
			Cable with connector M8, 3-pin, 0.2 m	IHM04-2B5PSVR8S	1108729
	Cable, 3-wire, 2 m	IHM04-2B5PSVU2S		1103551	
	Connector M8, 3-pin	IHM04-2B5PSVT0S		1108724	
Short-body	NPN	Visual adjustment indicator, triple sensing range	Cable, 3-wire, 2 m	IHM04-2B5NSVU2K	1108013
			PNP	Visual adjustment indicator, IO-Link, triple sensing range	Cable with connector M8, 3-pin, 0.2 m
	Cable, 3-wire, 2 m	IHM04-2B5PSVU2K			1103550

- **Sub product family:** IMM05
- **Cylindrical thread design:** M5
- **Installation type:** flush
- **Electrical wiring:** DC 3-wire

Sensing range S <sub>n</sub>	Housing	Switching output	Output function	Special features	Connection type	Type	Part no.
0.8 mm	Standard design	NPN	NC	Visual adjustment indicator	Cable, 3-wire, 2 m	IMM05-0B8NOVU2S	1114516
					Connector M8, 3-pin	IMM05-0B8NOVT0S	1114523
			NO	Visual adjustment indicator	Cable with connector M8, 3-pin, 0.2 m	IMM05-0B8NSVR8S	1108732
					Cable, 3-wire, 2 m	IMM05-0B8NSVU2S	1103634
					Connector M8, 3-pin	IMM05-0B8NSVT0S	1114520
					PNP	NC	Visual adjustment indicator
		Connector M8, 3-pin	IMM05-0B8POVT0S	1111255			
		NO	Visual adjustment indicator, IO-Link	Cable with connector M8, 3-pin, 0.2 m	IMM05-0B8PSVR8S	1111249	
				Cable, 3-wire, 2 m	IMM05-0B8PSVU2S	1101831	
				Connector M8, 3-pin	IMM05-0B8PSVT0S	1103984	

Sensing range $S_n$	Housing	Switching output	Output function	Special features	Connection type	Type	Part no.
1.5 mm	Standard design	NPN	NC	Visual adjustment indicator	Cable, 3-wire, 2 m	IMM05-1B5NOVU2S	1114518
					Connector M8, 3-pin	IMM05-1B5NOVT0S	1114527
		NO	Visual adjustment indicator	Cable, 3-wire, 2 m	IMM05-1B5NSVU2S	1101904	
				Connector M8, 3-pin	IMM05-1B5NSVT0S	1114526	
		PNP	NC	Visual adjustment indicator	Cable, 3-wire, 2 m	IMM05-1B5POVU2S	1111254
					Connector M8, 3-pin	IMM05-1B5POVT0S	1111256
		NO	Visual adjustment indicator, IO-Link	Cable with connector M8, 3-pin, 0.2 m	IMM05-1B5PSVR8S	1108733	
				Cable, 3-wire, 2 m	IMM05-1B5PSVU2S	1101013	
				Connector M8, 3-pin	IMM05-1B5PSVT0S	1101611	
		Short-body	NPN	NO	Visual adjustment indicator	Cable, 3-wire, 2 m	IMM05-1B5NSVU2K
	Connector M8, 3-pin					IMM05-1B5NSVT0K	1105627
	PNP		NO	Visual adjustment indicator, IO-Link	Cable with connector M8, 3-pin, 0.2 m	IMM05-1B5PSVR8K	1108730
					Cable, 3-wire, 2 m	IMM05-1B5PSVU2K	1101612



- **Sub product family:** IMM05
- **Cylindrical thread design:** M5
- **Installation type:** quasi-flush
- **Electrical wiring:** DC 3-wire
- **Sensing range  $S_n$ :** 2.5 mm

Housing	Switching output	Output function	Special features	Connection type	Type	Part no.
Standard design	NPN	NO	Visual adjustment indicator, triple sensing range	Connector M8, 3-pin	IMM05-2B5NSVT0S	1103987
		NC		Cable, 3-wire, 2 m	IMM05-2B5POVU2S	1114519
	PNP	NO	Visual adjustment indicator, IO-Link, triple sensing range	Cable with connector M8, 3-pin, 0.2 m	IMM05-2B5PSVR8S	1108734
				Cable, 3-wire, 2 m	IMM05-2B5PSVU2S	1101832
				Connector M8, 3-pin	IMM05-2B5PSVT0S	1104202
Short-body	NPN	NO	Visual adjustment indicator, triple sensing range	Cable, 3-wire, 2 m	IMM05-2B5NSVU2K	1103981
		NO		Cable with connector M8, 3-pin, 0.2 m	IMM05-2B5PSVR8K	1108731
	PNP	NO	Visual adjustment indicator, IO-Link, triple sensing range	Cable, 3-wire, 2 m	IMM05-2B5PSVU2K	1103563

- **Sub product family:** IHM06
- **Installation type:** flush
- **Electrical wiring:** DC 3-wire

Sensing range $S_n$	Housing	Switching output	Output function	Special features	Connection type	Type	Part no.		
1.5 mm	Extremely short model	NPN	NO	Visual adjustment indicator	Cable, 3-wire, 2 m	IHM06-1B5NSVW2G	1103298		
					Connector M8, 3-pin	IHM06-1B5NSVTOG	1101120		
		PNP	NC	Visual adjustment indicator	Cable, 3-wire, 2 m	IHM06-1B5POVW2G	1104484		
					NO	Visual adjustment indicator, IO-Link	Cable, 3-wire, 2 m	IHM06-1B5PSVU2G	1104494
							Connector M8, 3-pin	IHM06-1B5PSVW2G	1099600
		Short-body	PNP	NO	Visual adjustment indicator, IO-Link	Connector M8, 3-pin	IHM06-1B5PSVTOG	1101119	
	Cable, 3-wire, 2 m					IHM06-1B5PSVU2K	1115211		
	Cable, 3-wire, 2 m					IHM06-1B5PSVW2K	1114598		
	2 mm	Extremely short model	NPN	NC	Visual adjustment indicator	Cable, 3-wire, 2 m	IHM06-02BNOVW2G	1103980	
Connector M8, 3-pin						IHM06-02BNOVTOG	1101123		
NO			Visual adjustment indicator	Cable, 3-wire, 2 m	IHM06-02BNSVW2G	1103979			

Sensing range S <sub>n</sub>	Housing	Switching output	Output function	Special features	Connection type	Type	Part no.		
		PNP	NC	Visual adjustment indicator	Connector M8, 3-pin	IHM06-02BNSVT0G	1101126		
					Cable, 3-wire, 2 m	IHM06-02BPOVW2G	1103978		
			NO	Visual adjustment indicator, IO-Link	Connector M8, 3-pin	IHM06-02BPOVT0G	1101122		
					Cable, 3-wire, 2 m	IHM06-02BPSVW2G	1099599		
					Connector M8, 3-pin	IHM06-02BPSVT0G	1101121		
		Standard design	NPN	NC	Visual adjustment indicator	Cable, 3-wire, 2 m	IHM06-02BNOVW2S	1104492	
						Connector M8, 3-pin	IHM06-02BNOVT0S	1101132	
				NO	Visual adjustment indicator	Cable, 3-wire, 2 m	IHM06-02BNSVW2S	1104493	
						Connector M8, 3-pin	IHM06-02BNSVT0S	1101131	
			PNP	NC	Visual adjustment indicator	Cable, 3-wire, 2 m	IHM06-02BPOVW2S	1104491	
	Connector M8, 3-pin					IHM06-02BPOVT0S	1101134		
	NO			Visual adjustment indicator, IO-Link	Cable, 3-wire, 2 m	IHM06-02BPSVU2S	1104490		
					Connector M8, 3-pin	IHM06-02BPSVW2S	1101165		
	Short-body	NPN	NC	Visual adjustment indicator	Cable, 3-wire, 2 m	IHM06-02BNOVW2K	1104488		
					Connector M8, 3-pin	IHM06-02BNOVT0K	1101129		
					NO	Visual adjustment indicator	Cable, 3-wire, 2 m	IHM06-02BNSVW2K	1104489
			Connector M8, 3-pin	IHM06-02BNSVT0K			1101130		
			PNP	NC	Visual adjustment indicator	Cable, 3-wire, 2 m	IHM06-02BPOVW2K	1104487	
						Connector M8, 3-pin	IHM06-02BPOVT0K	1101128	
				NO	Visual adjustment indicator, IO-Link	Cable, 3-wire, 2 m	IHM06-02BPSVU2K	1104486	
		Connector M8, 3-pin				IHM06-02BPSVW2K	1101164		
							Connector M8, 3-pin	IHM06-02BPSVT0K	1101127

Sensing range $S_n$	Housing	Switching output	Output function	Special features	Connection type	Type	Part no.	
3 mm	Extremely short model	NPN	NC	Visual adjustment indicator, triple sensing range	Connector M8, 3-pin	IHM06-03BNOVTOG	1103986	
			NO		Cable, 3-wire, 2 m	IHM06-03BNSVW2G	1107047	
		PNP	NC		Connector M8, 3-pin	IHM06-03BNSVTOG	1103985	
			NO	Connector M8, 3-pin	IHM06-03BPOVTOG	1103983		
		Standard design	NPN	NC	Visual adjustment indicator, triple sensing range	Cable, 3-wire, 2 m	IHM06-03BPSVW2G	1107049
				NO		Connector M8, 3-pin	IHM06-03BPSVTOG	1103982
	Standard design	PNP	NO	Visual adjustment indicator, triple sensing range	Connector M8, 3-pin	IHM06-03BNSVTOG	1107051	
			NO		Connector M8, 3-pin	IHM06-03BPSVTOG	1107050	
	Short-body	NPN	NC	Visual adjustment indicator, triple sensing range	Connector M8, 3-pin	IHM06-03BNOVTOK	1104498	
			NO		Cable, 3-wire, 2 m	IHM06-03BNSVW2K	1113394	
			NO		Connector M8, 3-pin	IHM06-03BNSVTOK	1104496	
		PNP	NC	Connector M8, 3-pin	IHM06-03BPOVTOK	1104497		
			NO	Connector M8, 3-pin	IHM06-03BPSVTOK	1104495		

- **Sub product family:** IHM06
- **Installation type:** non-flush
- **Electrical wiring:** DC 3-wire

Sensing range $S_n$	Housing	Switching output	Output function	Special features	Connection type	Type	Part no.
4 mm	Standard design	NPN	NC	Visual adjustment indicator	Connector M8, 3-pin	IHM06-04NNOVT0S	1104504
			NO	Visual adjustment indicator	Cable, 3-wire, 2 m	IHM06-04NNSVW2S	1104514
		PNP	NC	Visual adjustment indicator	Connector M8, 3-pin	IHM06-04NNSVT0S	1104503
			NO	Visual adjustment indicator, IO-Link	Cable, 3-wire, 2 m	IHM06-04NPOVT0S	1104505
		PNP	NC	Visual adjustment indicator	Connector M8, 3-pin	IHM06-04NPSVW2S	1104515
			NO	Visual adjustment indicator, IO-Link	Connector M8, 3-pin	IHM06-04NPSVT0S	1104506
	Short-body	NPN	NC	Visual adjustment indicator	Connector M8, 3-pin	IHM06-04NNOVT0K	1104501
			NO	Visual adjustment indicator	Cable, 3-wire, 2 m	IHM06-04NNSVW2K	1104513
				Visual adjustment indicator	Connector M8, 3-pin	IHM06-04NNSVT0K	1104502
		PNP	NC	Visual adjustment indicator	Connector M8, 3-pin	IHM06-04NPOVT0K	1104500
			NO	Visual adjustment indicator, IO-Link	Cable, 3-wire, 2 m	IHM06-04NPSVW2K	1104512
				Visual adjustment indicator, IO-Link	Connector M8, 3-pin	IHM06-04NPSVT0K	1104499

Sensing range $S_n$	Housing	Switching output	Output function	Special features	Connection type	Type	Part no.
6 mm	Standard design	NPN	NO	Visual adjustment indicator, triple sensing range	Connector M8, 3-pin	IHM06-06NNSVT0S	1113395
		PNP	NO		Connector M8, 3-pin	IHM06-06NPSVT0S	1114155
	Short-body	NPN	NC	Visual adjustment indicator, triple sensing range	Connector M8, 3-pin	IHM06-06NNOVT0K	1104511
					Cable, 3-wire, 2 m	IHM06-06NNSVW2K	1106314
			Connector M8, 3-pin		IHM06-06NNSVT0K	1104510	
			Cable, 3-wire, 2 m		IHM06-06NPOVW2K	1108857	
		PNP	NC	Visual adjustment indicator, IO-Link, triple sensing range	Connector M8, 3-pin	IHM06-06NPOVT0K	1104509
					Cable with connector M8, 3-pin, 0.15 m	IHM06-06NPSVRDKS01	1139255
			Cable with connector M8, 3-pin, with knurled nuts, 0.2 m		IHM06-06NPSVR8K	1134492	
			Cable, 3-wire, 2 m		IHM06-06NPSVW2K	1105591	
			Connector M8, 3-pin		IHM06-06NPSVT0K	1104507	
			NO				

## SICK AT A GLANCE

SICK is one of the leading manufacturers of intelligent sensors and sensor solutions for industrial applications. A unique range of products and services creates the perfect basis for controlling processes securely and efficiently, protecting individuals from accidents and preventing damage to the environment.

We have extensive experience in a wide range of industries and understand their processes and requirements. With intelligent sensors, we can deliver exactly what our customers need. In application centers in Europe, Asia and North America, system solutions are tested and optimized in accordance with customer specifications. All this makes us a reliable supplier and development partner.

Comprehensive services complete our offering: SICK LifeTime Services provide support throughout the machine life cycle and ensure safety and productivity.

For us, that is “Sensor Intelligence.”

## WORLDWIDE PRESENCE:

Contacts and other locations –[www.sick.com](http://www.sick.com)